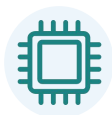


## 16PON PORTS EPON OLT

### FD1216S-R1



Dedicated Chip



USB Interface



Back Battery Unit



Layer3 Switching

### Brief Views

Pizza-Box OLT series products is 1U high 19 inch rack mount product. The features of the OLT are small, convenient, flexible, easy to deploy, high performance. It is appropriate to deploy in an compact room environment.

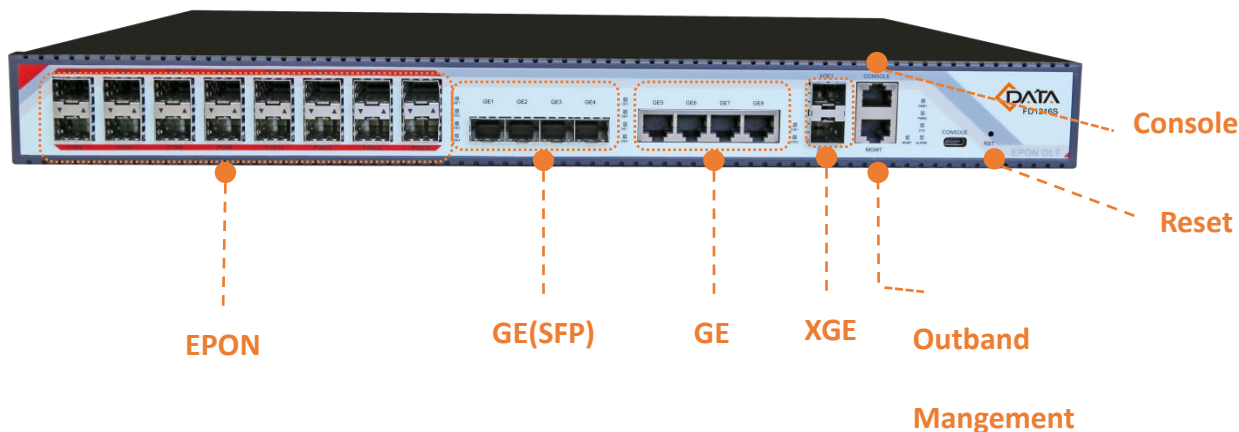
The OLT can use for “Triple-Play”, CPN, IP Camera, Enterprise LAN and IOT applications. It is a high performance products.

FD1216S-R1 provides 1 USB interface, 4GE(copper) and 4GE optical interface, 2\*10Gb uplink interface, and 16 EPON ports for downstream. It can support 1024 ONUs under 1:64 splitter ratio.

## Functional Feature

- Support OAM Protocol
  - In compliant with IEEE802.3ah Standard
  - 1U height 16PON OLT product in compact design of Pizza-Box
  - Complete PON protection switching function
- **Layer 2 Switching Function**
- Support port VLAN and protocol VLAN
  - Support VLAN tag/Untag ,vlan transparent transmission;
  - Support 4096 VLAN
  - Support 802.3ad trunk
  - RSTP
  - QOS based on port ,VID,TOS and MAC address
  - IGMP Snooping
  - 802.x flow control
  - Port stability statistic and monitoring
- **Layer-three function**
- Support static routing protocol
  - Support dynamic RIP protocol
  - Support dhcp-relay function
  - Support vlanif interface configuration
- **EPON Function**
- Support VLAN division and user separation to avoid broadcast storm;
  - Support various LLID configuration and single LLID configuration .Different user and different service could provide different QoS by means of different LLID channels.
  - Support ONU auto-discovery/Link detection/remote upgrade of software;

## Product Interface



## Product Specification

ITEM		FD1216S-R1	
Management Rack	Type	1U 19-inch standard box	
Uplink Port	4 10/100/1000M auto-negotiation Ethernet ports		
	4 SFP interfaces		
	10-Gigabit	2 SFP+ interfaces	
PON Port	Quantity	16	
	Physical interface	SFP slot	
	Interface type	EPON: IEEE802.3ah	
	Max splitting ratio	EPON: 1:64	
Management Port		1 100/1000BASE-Tx out-band Ethernet port 1 CONSOLE local management port	
PON Port attribute	Transmission distance	20KM	
	Port rate	EPON: Symmetrical 1.25Gbps	
	Wavelength	Forwarding: 1490nm	Receiving: 1310nm
	Interface type	SC/UPC	
	Fiber type	9/125μm SMF (Single Mode Fiber)	
	Receiving sensitivity	EPON	-27dBm
	Saturation power	EPON	-6dBm
Network management method		Support CLI、SNMP、TELNET、SSH、WEB	
Business capabilities		Support ONU auto-discovery/Link detection/remote upgrade of software; Support VLAN division and user separation to avoid broadcast storm; Support various LLID configuration and single LLID configuration .Different user and different service could provide different QoS by means of different LLID channels. Support power-off alarm function ,easy for link problem detection Support broadcasting storm resistance function Support port isolation between different ports Support ACL and SNMP to configure data packet filter flexibly Specialized design for system breakdown prevention to maintain	

		stable system Support dynamic distance calculation on EMS online Support RSTP,IGMP Proxy
Backplane Bandwidth		96G
Size		440*362*44(mm*mm*mm)
Weight		5.74kg
Power supply	220VAC	AC: 90V~240V, 47/63Hz
	-48DC	DC:-36V~-72V
Power Consumption		80W
Working environment	Working temperature	-15~50°C
	Storage temperature	-40~85°C
	Relative humidity	5~90% (Non-condensing)

## Typical Application

