

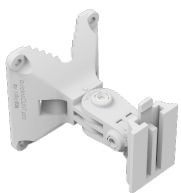
# mANT series

The new sector mANT antennas are the perfect companion for the BaseBox, NetBox, NetMetal or any other outdoor wireless device.

The mANT is a dual-polarization antenna with two RP-SMA connectors, it comes in two sizes, the 15dBi model and the 19dBi model. Both antennas have 120 degree beamwidth.



The mANT 15s is compatible with the SXT type mount, so you can use it with our durable and adjustable QuickMount systems. It comes with quickMOUNT PRO and the mANT 19s comes with metallic U bolt type mounts.



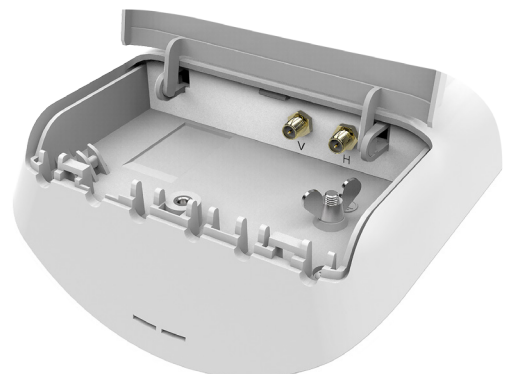
quickMOUNT PRO



K-41 screw kit



Metal ring

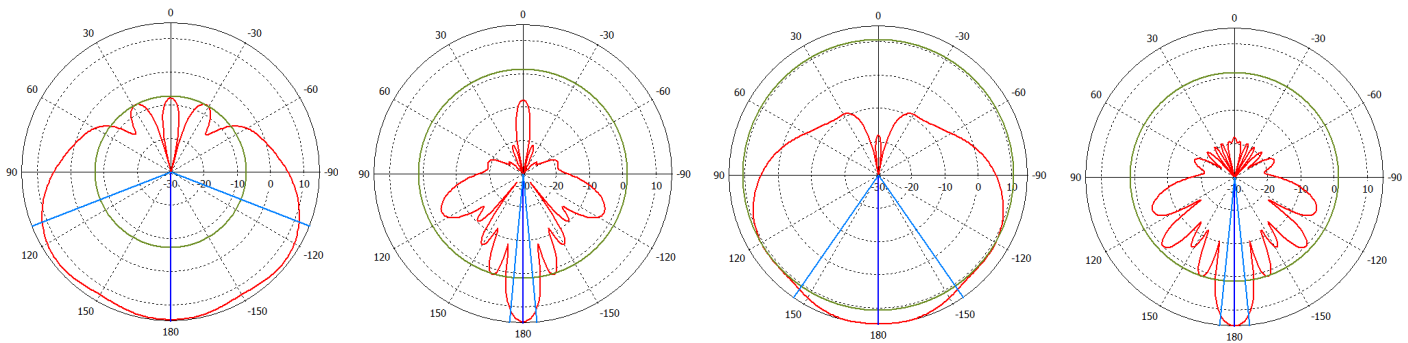


# Specifications

Product code	MTAS-5G-15D120	MTAS-5G-19D120
Antenna gain	15 dBi	19 dBi
Frequency range	5.17 - 5.825 GHz	5.17 - 5.825 GHz
Polarization	Vertical and horizontal	Vertical and horizontal
3DB Beamwidth - azimuth	120 deg	120 deg
3DB Beamwidth - elevation	10 deg	5 deg
VSWR	1.43 typ, 1.8 max	1.43 typ, 1.8 max
Port to Port isolation	>40 dB min	>40 dB min
Front-to-Back ratio	>30 dB	>30 dB
Cross Polarization	>30 dB	>30 dB
Weight	734 g	1270 g
Dimensions	140 x 348 x 82 mm	152 x 598 x 78 mm

## Cross Polarization

# Antenna patterns

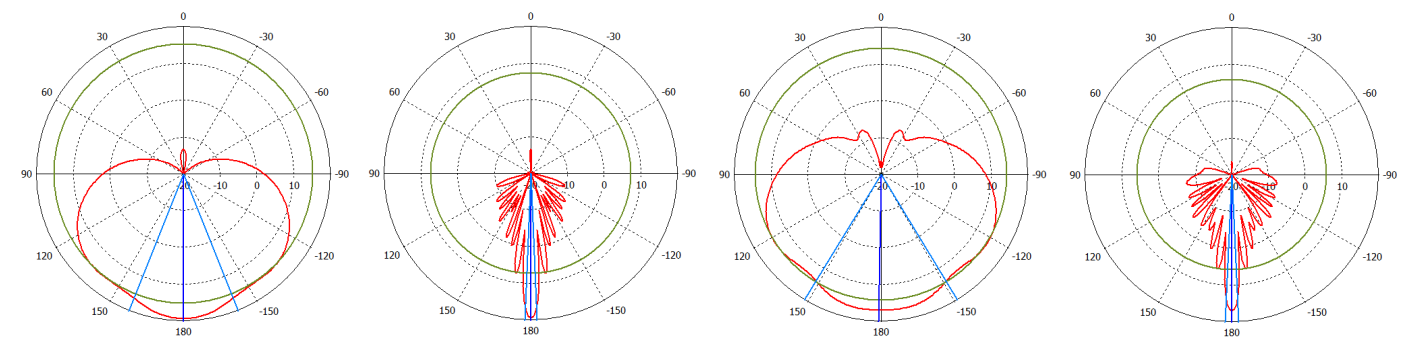


mANT 15s HP azimuth

mANT 15s HP elevation

mANT 15s VP azimuth

mANT 15s VP elevation



mANT 19s HP azimuth

mANT 19s HP elevation

mANT 19s VP azimuth

mANT 19s VP elevation